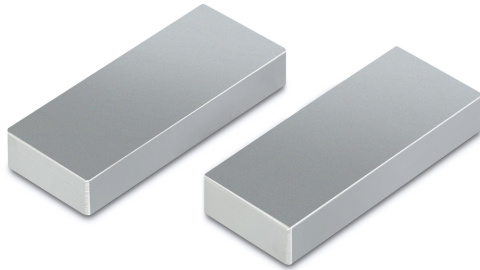


KERN AD 0022

KERN

Jaws with smooth surface



Category

Brand	Sauter
Product category	Measurementtechnology
Product group	Jaws, smooth

Construction

Dimension (W×D×H)	30×30×8 mm
Dimension housing (W×D×H)	30×30×8 mm
Dimensions completely mounted (W×D×H)	30×30×8 mm
Material	steel
Material display housing	Steel
Tensile/compressive force [Max]	1 kN
Maximum clamp width	30 mm
Clamping width	10 mm

Environmental conditions

Storage temperature [Min]	-10 °C
Storage temperature [Max]	40 °C

Packing & Shipping

Readability force [d] (N)	14 d
Dimensions packaging (W×D×H)	30×30×8 mm
Net weight	0,24 kg
Shipping method	Parcel service
Net weight approx.	0,25 kg
Gross weight approx.	0,25 kg
Shipping weight	0,24 kg

Pictograms

STANDARD



1 DAY